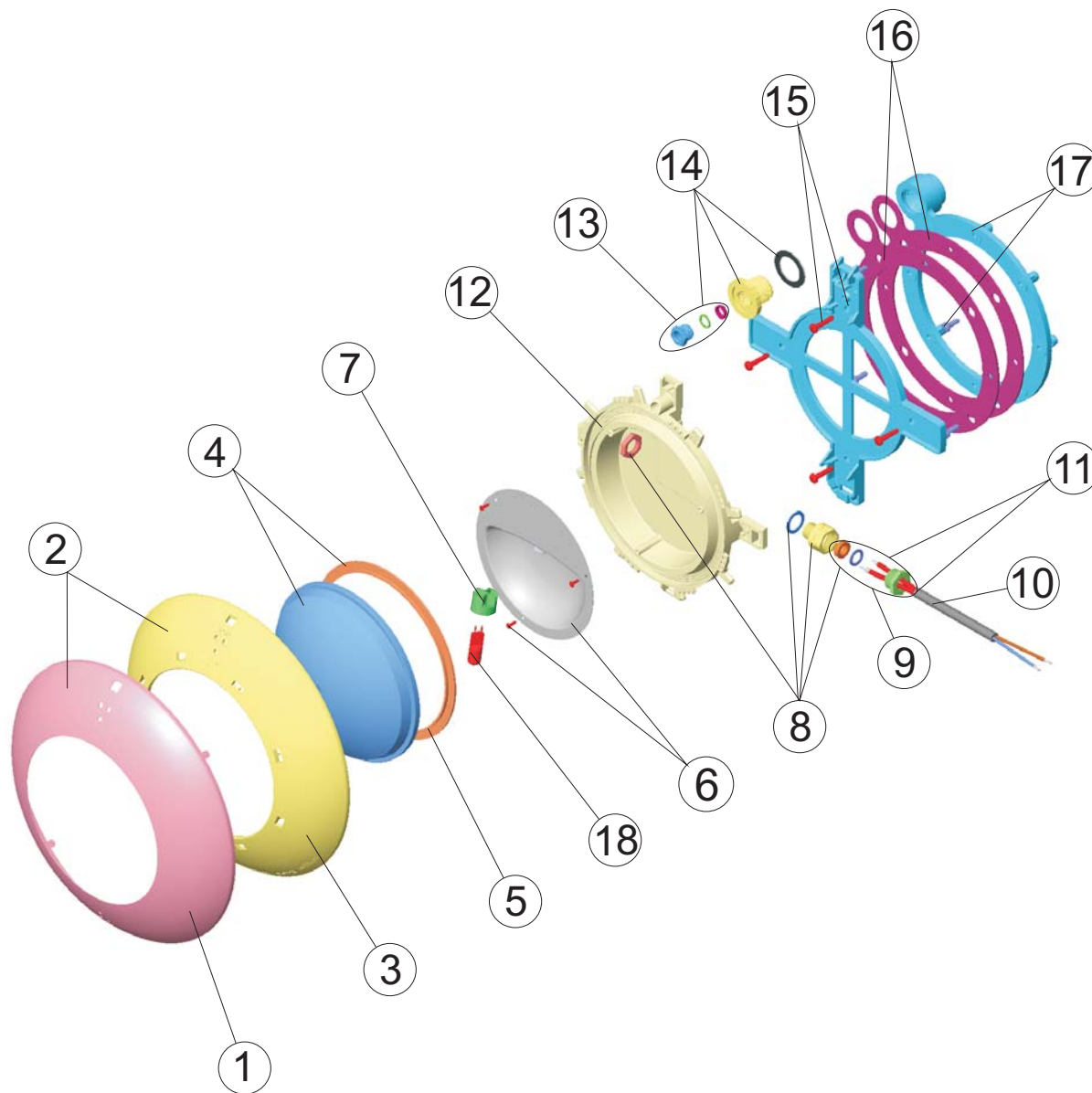


CODIGO : 24765 35668

DESCRIPCION : PR. EXTRA PLANO P. PREF. ARO BLANCO/INOX - LINER



POS.	CODIGO	DENOMINACION	POS.	CODIGO	DENOMINACION
1	4403012304	EMBELLECEDOR INOX PROYECTOR EXTRA PLANO	10	4403011905	CABLE PROYECTOR
2	4403012301	CJTO.EMBELLECED.INOX PROJEC.EXTRA PLANO	11	4403015405	CABLE PROYECTOR CON PRENSAESTOPAS
3	4403011901	EMBELLECEDOR PROYECTOR PLANO	12	4403011908	CUERPO PROYECTOR
4	4403012303	LENTE TRANSPARENTE + JUNTA	13	4403012704	PRENSAESTOPAS PG-9
5	4403010102	JUNTA SILICONA PROYECTOR	14	4403015702	CJTO. PRENSAESTOPAS
6	4403011903	REFLECTOR PORTALAMPARAS	15	4403013801	SOPORTE PROYECTOR
7	4403011407	PORTALAMPARAS	16	4403015704	JUNTA ADHESIVA PROYECTOR PLANO
8	4403012302	CJTO. PRENSAESTOPAS M-16 KT 19,5X2	17	4403013802	BRIDA FIJACION
9	4403014101	CJTO. TAPON PRENSAESTOPAS TR 12X2	18	00371	LAMPARA ALOGENA 12V 100W

ENGLISH

POS.	CODE	DESCRIPTION	POS.	CODE	DESCRIPTION
1	4403012304	RUSTPROOF DECORATIVE RING	10	4403011905	LIGHT CABLE
2	4403012301	SET RUSTPROOF DECORATIVE RING	11	4403015405	PROJECTOR CABLE, PACKING GLANDS PROJECTOR
3	4403011901	FLAT LIGHT FACEPLATE	12	4403011908	LIGHT BODY
4	4403012303	CLEAR LENS + GASKET	13	4403012704	PACKING GLAND PG-9
5	4403010102	LIGHT SILICON GASKET	14	4403015702	GLAND SEAL ASSY.
6	4403011903	LAMPHOLDER REFLECTOR PLATE	15	4403013801	LIGHT SUPPORT
7	4403011407	LAMP HOLDER	16	4403015704	ADHESIVE GASKET FLAT PROJECTOR
8	4403012302	GLAND SEAL M-16 KT 19,5X2	17	4403013802	LIGHT FIXING FLANGE
9	4403014101	KIT PLUG PACKING GLAND 12X2	18	00371	LIGHTBULB

FRANÇAIS

POS.	CODE	DESCRIPTION	POS.	CODE	DESCRIPTION
1	4403012304	ANNEAU ENJOLIVER INOX	10	4403011905	CABLE DE PROJECTEUR
2	4403012301	ENSEMBLE ANNEAU ENJOLIVER INOX	11	4403015405	CABLE PROJECTEUR PRESSE ÉTOUPE
3	4403011901	ENJOLIVEUR PROJECTEUR PLAT	12	4403011908	CORPS DU PROJECTEUR
4	4403012303	LENTE PROJECTEUR + JOINT	13	4403012704	PRESSE ÉTOUPE PG-9
5	4403010102	JOINT SILICONE PROJECTEUR	14	4403015702	ENS. PRESSE ÉTOUPE
6	4403011903	REFLECTEUR PORTE LAMPE	15	4403013801	SUPPORT PROJECTEUR
7	4403011407	PORTE-LAMPE	16	4403015704	JOINT ADHESIF PROJECTEUR PLAT
8	4403012302	ENSEMBLE PRESSE ÉTOUPE M-16 KT 19,5X2	17	4403013802	BRIDE FIXATION PROJECTEUR
9	4403014101	BOUCHON PRESSE ÉTOUPE 12x2	18	00371	LAMPE

ITALIANO

POS.	CODE	DESCRIPTION	POS.	CODE	DESCRIPTION
1	4403012304	ANELLO ORNAMENTALE INOSSID.	10	4403011905	CAVO FARO
2	4403012301	KIT ANELLO ORNAMENTALE INOSSID.	11	4403015405	CAVO FARO, PRESSACAVO
3	4403011901	ANELLO FRONTALE FARO PIATTO	12	4403011908	CORPO FARO
4	4403012303	LENTE PROIETTORE + GUERNIZIONE	13	4403012704	PRESSACAVO PG-9
5	4403010102	GUARNIZIONE SILICONE FARO	14	4403015702	KIT PRESSACAVI
6	4403011903	RIFLETTORE PORTALAMPADE	15	4403013801	SUPPORTO FARO
7	4403011407	PORTALAMPADE	16	4403015704	GUARNIZIONE ADESIVA FARO PIATTO
8	4403012302	KIT PRESSACAVO M-16 KT 19,5X2	17	4403013802	FLANGIA FISSAGGIO FARO
9	4403014101	KIT TAPPO	18	00371	LAMPADINA

DEUTSCH

POS.	CODE	DESCRIPTION	POS.	CODE	DESCRIPTION
1	4403012304	VERZIERUNGSRING ROSTFREI	10	4403011905	KABEL UWS
2	4403012301	SET VERZIERUNGSRING ROSTFREI	11	4403015405	KABEL UWS, QUETSCHDICHTUNG
3	4403011901	BLENDE UWS "EXTRA FLACH"	12	4403011908	LAMPENGEHÄUSE UWS "EXTRA FLACH"
4	4403012303	SILIKONDICHTUNG + O-RING	13	4403012704	QUETSCHVERSCHRAUBUNG PG-9
5	4403010102	DICHTUNG SILIKON UWS FLACH	14	4403015702	SET QUETSCHVERSCHRAUBUNG
6	4403011903	LAMPENHALTERUNG + REFLEKTOR UWS "EXTRA FLACH"	15	4403013801	SCHEINWERFERHALTERUNG
7	4403011407	LAMPENFASSUNG	16	4403015704	KLEBEDICHTUNG FLACHSCHEINWERFER
8	4403012302	SET QUETSCHDICHTUNG M-16 KT 19,5X2	17	4403013802	FLANSCH MIT SCHRAUBEN UWS
9	4403014101	KIT STOPFEN QUETSCHDICHTUNG 12X2	18	00371	LAMPE

PORTUGUÊS

POS.	CODE	DESCRIPTION	POS.	CODE	DESCRIPTION
1	4403012304	ANEL DECORATIVO INOXIDABLE	10	4403011905	CABO PROJECTOR
2	4403012301	CJTO. ANEL DECORATIVO INOXIDABLE	11	4403015405	CABO P' ROJECTOR BUCIM PROJECTOR
3	4403011901	EMBELEZADOR PROJECTOR PLANO	12	4403011908	CORPO PROJECTOR
4	4403012303	LENTE TRANSPARENTE + JUNTA	13	4403012704	BUCIN PG-9
5	4403010102	JUNTA SILICONE PROTECTOR	14	4403015702	CONJ.CAIXA DE VEDAÇÃO
6	4403011903	REFLECTOR PORTA-LÂMPADAS	15	4403013801	SUPORTE PROJECTOR
7	4403011407	PORTA-LÂMPADA	16	4403015704	JUNTA ADESIVA PROJECTOR EXTRA PLANO
8	4403012302	CONJUNTO BUCIM M-16 KT 19,5X2	17	4403013802	FLANGE FIXAÇÃO PROJECTOR
9	4403014101	CJTO. TAMPÃO VEDANTE 12X2	18	00371	BOMBILHA